

# SOFFIT MOUNTED COORDINATORS

REVERSIBLE - RH(LHRB) SHOWN

# THIS TEMPLATE APPLIES TO

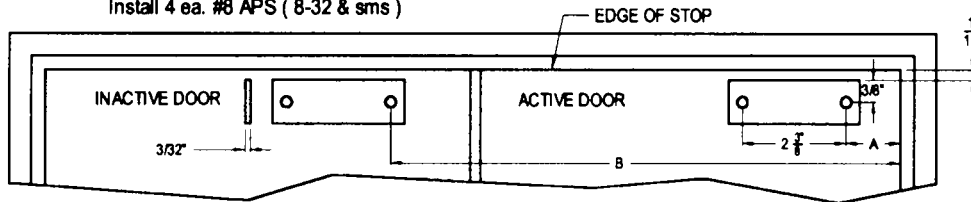
ITEMS NOS. 600 COORDINATORS, CB, AB & C BRACKETS



# INSTALLATION INSTRUCTIONS

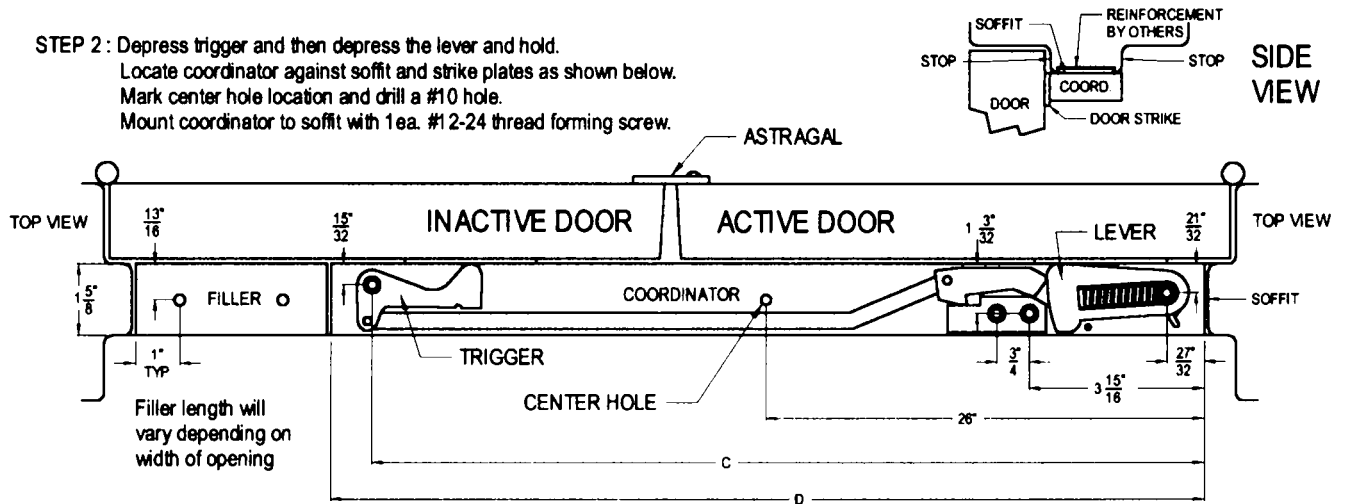
**IMPORTANT: INSTALL COORDINATOR BEFORE ANY OTHER HARDWARE EXCEPT HINGES.**

**STEP 1:** Close doors against stops and locate active and inactive door strikes as shown below.  
 For metal doors: Drill a #29 hole - tap 8-32.  
 For wood doors: Drill a #27 hole.  
 Install 4 ea. #8 APS ( 8-32 & sms )



COORDINATOR HOUSING	A	B
32" (N-632)	1 1/4"	27 1/2"
42" (NX-642)	1 1/4"	37 1/2"
52" (652)	1 1/4"	47 1/2"
60" (L-660)	1 1/4"	55 1/2"
66" (XL-600)	1 1/4"	61 1/2"
72" (XXL-600)	1 1/4"	67 1/2"

**STEP 2:** Depress trigger and then depress the lever and hold.  
 Locate coordinator against soffit and strike plates as shown below.  
 Mark center hole location and drill a #10 hole.  
 Mount coordinator to soffit with 1 ea. #12-24 thread forming screw.



**STEP 3:** Close doors to ensure coordinator is resting against both door strike plates.  
 Mark the 4 remaining mounting hole locations.  
 Drill #10 pilot holes.  
 Install 4 ea. #12-24 thread forming screws.

COORDINATOR MECHANISM	C	D
32" (N-632)	31"	32"
42" (NX-642)	41"	42"
52" (652)	51"	52"
60" (L-660)	59"	60"
66" (XL-600)	65"	66"
72" (XXL-600)	71"	72"

**STEP 4:** Fillers (if supplied) fill the void between the coordinator and soffit.  
 They mount the same as the coordinator.

**STEP 5:** Test operation by opening both doors and allowing the active door to close first. The active door should be held open until the inactive door closes.  
 If the coordinator overrides causing the active door to close prior to the inactive door **ADJUST DOOR CLOSER SPEEDS FIRST.**  
 If the coordinator still overrides, adjust the tension on the override mechanism by using a #1 Phillips head screwdriver and turning the screw in the lever end clockwise. SEE FIGURE A

**NOTE:** If the lever and or trigger does not return to the extended position after both doors are opened, the mounting screws thru the lever and or trigger may be too tight.  
 Back screws off 1/4 turn until the lever and or trigger return to the extended position.

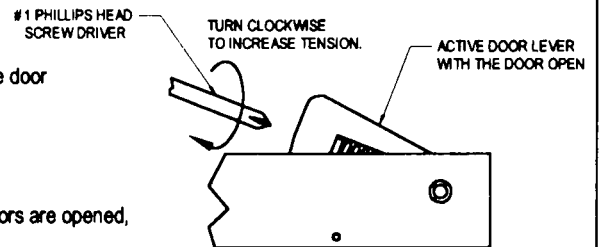


FIGURE A

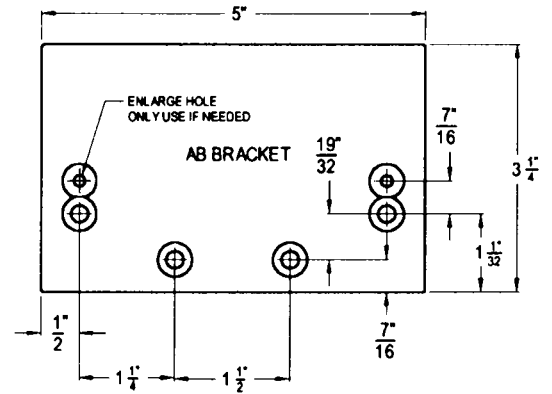
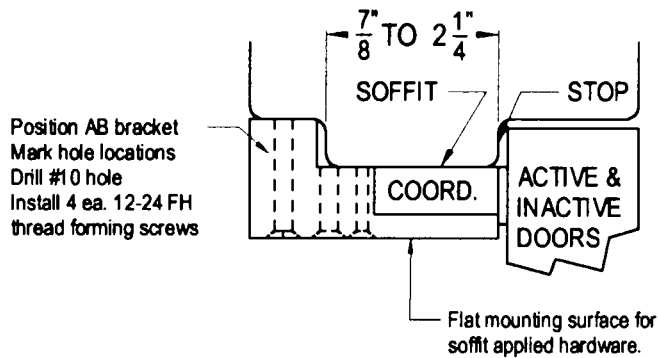
Door Controls International 2362 Bishop Circle East, Dexter MI. 48130 PH: 1-800-742-3634 FAX: 1-800-742-0410

## AB & C BRACKETS AND CARRY BAR INSTALLATION - REVERSE SIDE

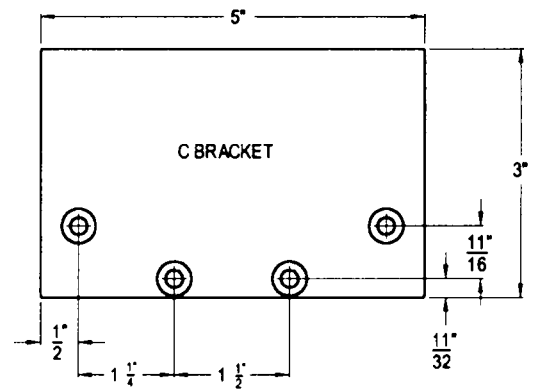
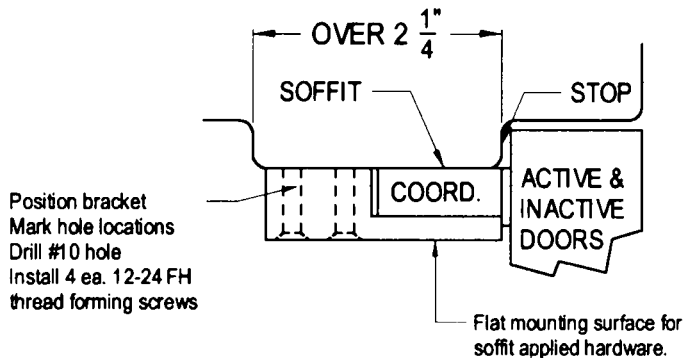
# INSTALLATION OF AB OR C BRACKET WHEN REQUIRED

AB and C brackets are available when it is necessary to mount parallel arm closers, vertical rod strikes or any soffit applied hardware. Supplied with 4 ea. 1/4-20 x 1/2" FH screws. To use to mount the required hardware. The mounting holes supplied in the bracket are to mount the bracket to the frame. Drill and tap the bracket for the soffit applied hardware. The depth of the soffit will determine the required bracket. See below.

## AB BRACKET FOR SOFFIT WIDTHS UP TO 2 1/4"



## C BRACKET FOR SOFFITS WIDTHS OVER 2 1/4"



# INSTALLATION OF CB CARRY BAR WHEN REQUIRED

Drill two 1/4" dia. holes thru inactive door. Enlarge door skin opposite carry bar to 3/8" dia. for sex nuts. Mount carry bar with 2 ea. 1/4-20 and screws and sex nuts.

