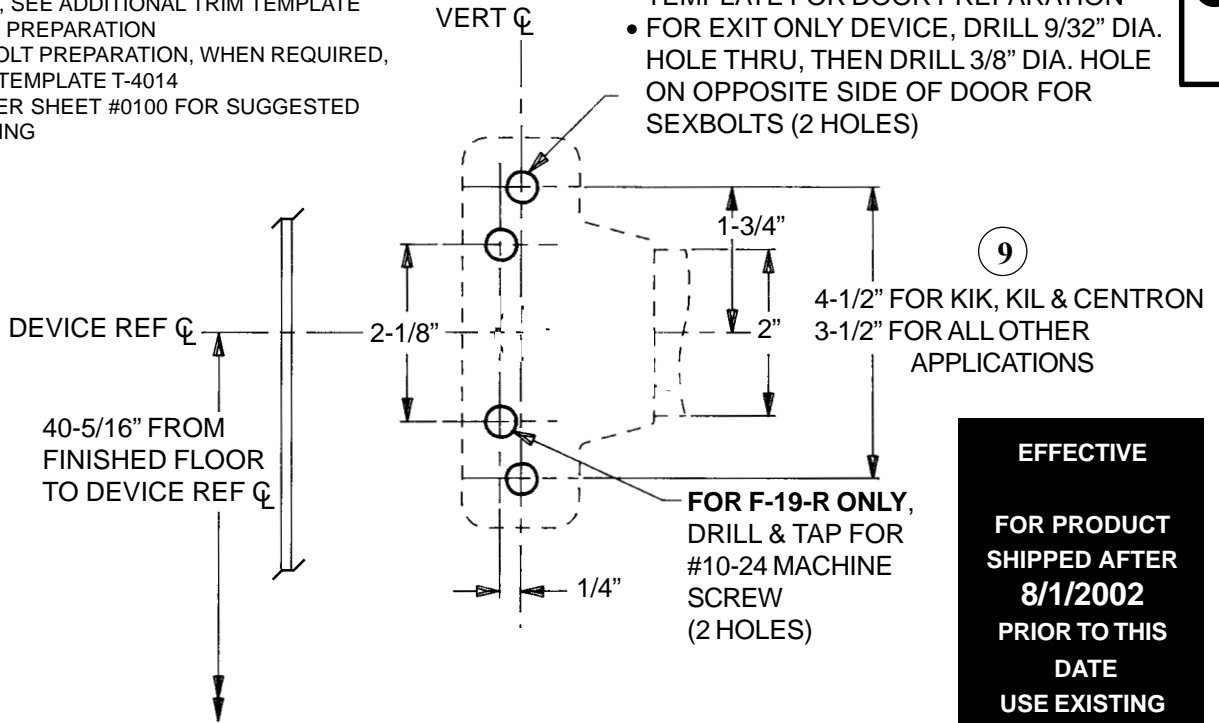


**LHR SHOWN**  
**RHR OPPOSITE**

- FOR OUTSIDE TRIM PREPARATION, WHEN REQUIRED, SEE ADDITIONAL TRIM TEMPLATE FOR DOOR PREPARATION
- FOR SEXBOLT PREPARATION, WHEN REQUIRED, REFER TO TEMPLATE T-4014
- SEE MASTER SHEET #0100 FOR SUGGESTED REINFORCING

- FOR DEVICE WITH TRIM, REFER TO TRIM TEMPLATE FOR DOOR PREPARATION
- FOR EXIT ONLY DEVICE, DRILL 9/32" DIA. HOLE THRU, THEN DRILL 3/8" DIA. HOLE ON OPPOSITE SIDE OF DOOR FOR SEXBOLTS (2 HOLES)



9

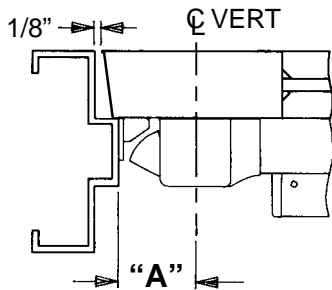
4-1/2" FOR KIK, KIL & CENTRON  
3-1/2" FOR ALL OTHER APPLICATIONS

**FOR F-19-R ONLY,**  
DRILL & TAP FOR  
#10-24 MACHINE  
SCREW  
(2 HOLES)

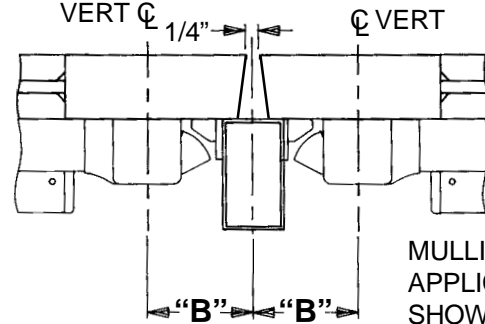
**EFFECTIVE**

**FOR PRODUCT SHIPPED AFTER 8/1/2002 PRIOR TO THIS DATE USE EXISTING TEMPLATES**

**SINGLE DOOR APPLICATION**



**DOUBLE DOOR APPLICATION**



MULLION APPLICATION SHOWN

STRIKE	INSTALLED	"A"	MIN. STILE
565	SURFACE	1-7/16"	2-7/8"
565	FLUSH	15/16"	1-3/4"
560*	SURFACE	1-5/8"	3-1/2"
F-570*	SURFACE	1-5/8"	3-1/2"
F-490*	SURFACE	1-5/8"	3-1/2"

STRIKE	INSTALLED WITH	"B"	MIN. STILE
565	2923 MULLION	2-3/16"	3-1/8"
565	4023 MULLION	2-7/16"	3-3/8"
560	2923 MULLION	2-3/8"	3-1/2"
560	4023 MULLION	2-5/8"	3-3/4"
F-570	F-4023 MULLION	2-5/8"	3-3/4"
F-490	F-4023 MULLION	2-5/8"	3-3/4"
571	19 VERTICAL	2-5/16"	3-1/4"
571-A	19 VERTICAL	1-13/16"	2-3/4"

\* - COVERS ANSI A115.2 STOCK PREP WHEN USED WITH A 5/8" STOP HEIGHT

NOTE: 571 & 571-A STRIKES ARE NOT APPROVED FOR FIRE RATED APPLICATIONS **DO NOT SCALE**